

NOTE:
LOTS 48, 49, 50, 51 & 75 TO BE CONSTRUCTED WITH 3.5m WIDTH VEHICLE CROSSINGS.

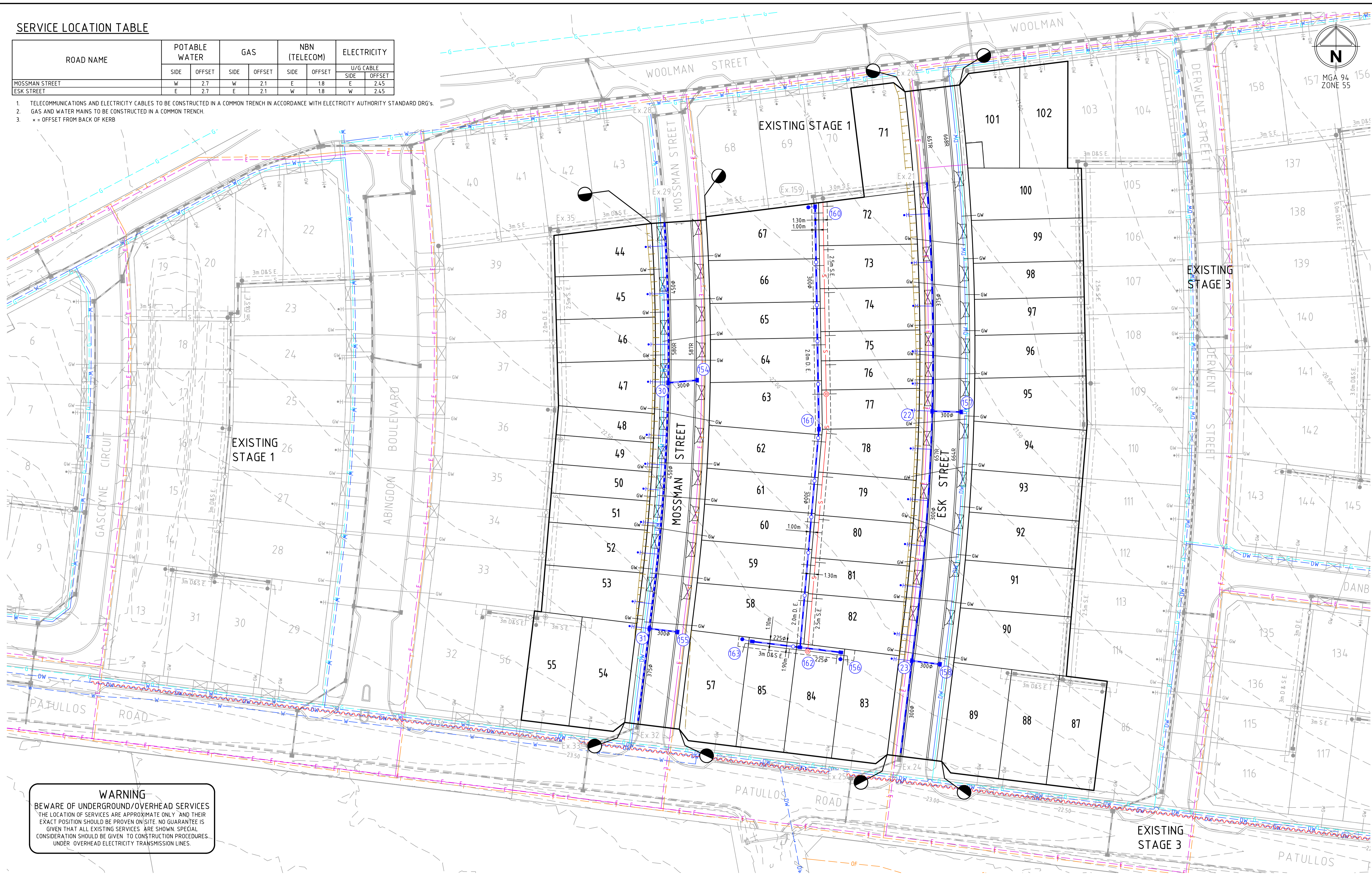
NOTE:
TEMP OUTFALL SWALE CONSTRUCTED FOR 5m DISCHARGE PIPE OUT OF EXISTING PITS 32 AND 24 TO BE REMOVED AS PART OF EARTHWORKS.



SERVICE LOCATION TABLE

ROAD NAME	POTABLE WATER		GAS		NBN (TELECOM)		ELECTRICITY	
	SIDE	OFFSET	SIDE	OFFSET	SIDE	OFFSET	U/G CABLE	U/G CABLE
MOSSMAN STREET	W	2.7	W	2.1	E	1.8	E	2.45
ESK STREET	E	2.7	E	2.1	W	1.8	W	2.45

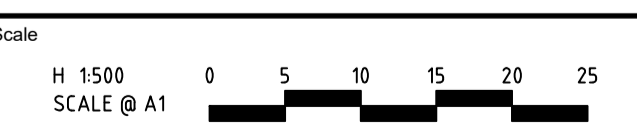
- TELECOMMUNICATIONS AND ELECTRICITY CABLES TO BE CONSTRUCTED IN A COMMON TRENCH IN ACCORDANCE WITH ELECTRICITY AUTHORITY STANDARD DRG'S.
- GAS AND WATER MAINS TO BE CONSTRUCTED IN A COMMON TRENCH.
- x = OFFSET FROM BACK OF KERB



WARNING
 BEWARE OF UNDERGROUND/OVERHEAD SERVICES
 THE LOCATION OF SERVICES ARE APPROXIMATE ONLY AND THEIR EXACT POSITION SHOULD BE PROVEN ON SITE. NO GUARANTEE IS GIVEN THAT ALL EXISTING SERVICES ARE SHOWN. SPECIAL CONSIDERATION SHOULD BE GIVEN TO CONSTRUCTION PROCEDURES UNDER OVERHEAD ELECTRICITY TRANSMISSION LINES.

file name: 306714CR201.dwg, In: \data\proj\306714\306714.dwg, plot date: 22/09/2020 2:26 PM Sheet: 3 of 11 Sheets
 file location: \\spire\projects\306714\306714.dwg

Rev	Issued To Council	Amendments	C.B	22/09/20	Approved	Date
A	ISSUED TO COUNCIL		C.B	22/09/20		



© Spiire Australia Pty Ltd All Rights Reserved
 This document is produced by Spiire Australia Pty Ltd solely for the benefit of and use by the client in accordance with the terms of the retainer. Spiire Australia Pty Ltd does not and shall not assume any responsibility or liability whatsoever to any third party arising out of any use or reliance by third party on the content of this document.

10 MOORABOOL STREET GEELONG
 VICTORIA 3220 AUSTRALIA T 61 3 5249 6888
 spiire.com.au ABN 55 050 029 635

AUSTIN LAND

Designed
J.RAMSAY

Authorised
C.BIRKETT

Checked
J.KOEHLER

Date
 22-09-2020

LARA WEST DEVELOPMENT
STAGE 4
 ROAD AND DRAINAGE
 CITY OF GREATER GEELONG
 AUSTIN LAND PTY LTD

PRELIMINARY Drg No **306714CR201** Rev **A**