

WARNING
BEWARE OF UNDERGROUND/OVERHEAD SERVICES. THE LOCATION OF SERVICES ARE APPROXIMATE ONLY AND THEIR EXACT POSITION SHOULD BE PROVEN ON SITE. NO GUARANTEE IS GIVEN THAT ALL EXISTING SERVICES ARE SHOWN. SPECIAL CONSIDERATION SHOULD BE GIVEN TO CONSTRUCTION PROCEDURES UNDER OVERHEAD ELECTRICITY TRANSMISSION LINES.

EXISTING OVERHEAD POWERLINES AND POLES TO BE REMOVED PRIOR TO STAGE 1 CONSTRUCTION

file name: 306713CR200.dwg; layout name: CR200; plot date: 22/03/2021 2:13 PM; sheet: 2 of 30; sheets

Rev	Amendments	Approved	Date
B	AMENDED EASEMENT	C.B	05/03/21
A	ISSUED TO COUNCIL	C.B	08/09/20

Scale: H 1500 SCALE @ A1

© Spiire Australia Pty Ltd All Rights Reserved
This document is produced by Spiire Australia Pty Ltd solely for the benefit of and use by the client in accordance with the terms of the retainer. Spiire Australia Pty Ltd does not and shall not assume any responsibility or liability whatsoever to any third party arising out of any use or reliance by third party on the content of this document.

spiire

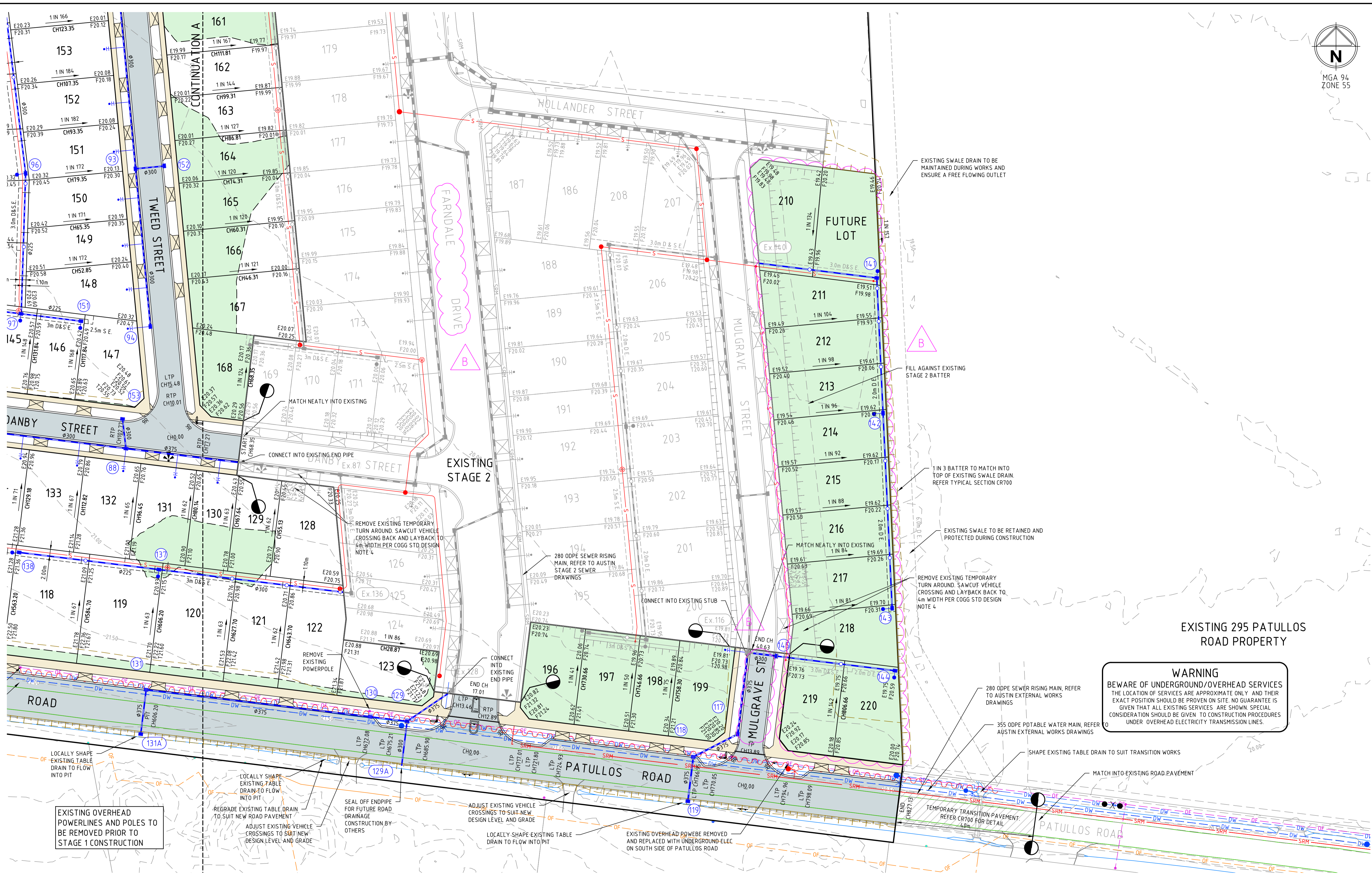
10 MOORABOOL STREET GEELONG
VICTORIA 3220 AUSTRALIA T 61 3 5249 6888
spiire.com.au ABN 55 050 029 635

AUSTINLAND

Designed: J.RAMSAY
Checked: J.KOEHLER
Authorised: C.BIRKETT
Date: 08-09-2020

**LARA WEST DEVELOPMENT
STAGE 3
ROAD AND DRAINAGE
CITY OF GREATER GEELONG
AUSTIN LAND PTY LTD**

PRELIMINARY Drg No: 306713CR200 Rev: B

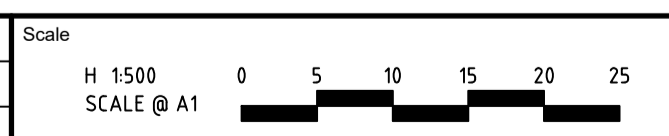


WARNING
 BEWARE OF UNDERGROUND/OVERHEAD SERVICES
 THE LOCATION OF SERVICES ARE APPROXIMATE ONLY AND THEIR EXACT POSITION SHOULD BE PROVEN ON SITE. NO GUARANTEE IS GIVEN THAT ALL EXISTING SERVICES ARE SHOWN. SPECIAL CONSIDERATION SHOULD BE GIVEN TO CONSTRUCTION PROCEDURES UNDER OVERHEAD ELECTRICITY TRANSMISSION LINES.

EXISTING OVERHEAD POWERLINES AND POLES TO BE REMOVED PRIOR TO STAGE 1 CONSTRUCTION

file name: 306713CR201.dwg, layout name: CR201, plotted by: James Ramsey, file location: G:\306713\306713.dwg, plot date: 22/03/2021 2:14: PM, sheet: 3 of 30 sheets

Rev	Description	Approved	Date
B	AMENDED ROAD NAMES AND ADDED LOTS	C.B	05/03/21
A	ISSUED TO COUNCIL	C.B	08/09/20
Rev	Amendments	Approved	Date



© Spiire Australia Pty Ltd All Rights Reserved
 This document is produced by Spiire Australia Pty Ltd solely for the benefit of and use by the client in accordance with the terms of the retainer. Spiire Australia Pty Ltd does not and shall not assume any responsibility or liability whatsoever to any third party arising out of any use or reliance by third party on the content of this document.



10 MOORABOOL STREET GEELONG
 VICTORIA 3220 AUSTRALIA T 61 3 5249 6888
 spiire.com.au ABN 55 050 029 635

AUSTIN LAND

Designed
 J.RAMSAY
 Authorised
 C.BIRKETT

Checked
 J.KOEHLER
 Date
 08-09-2020

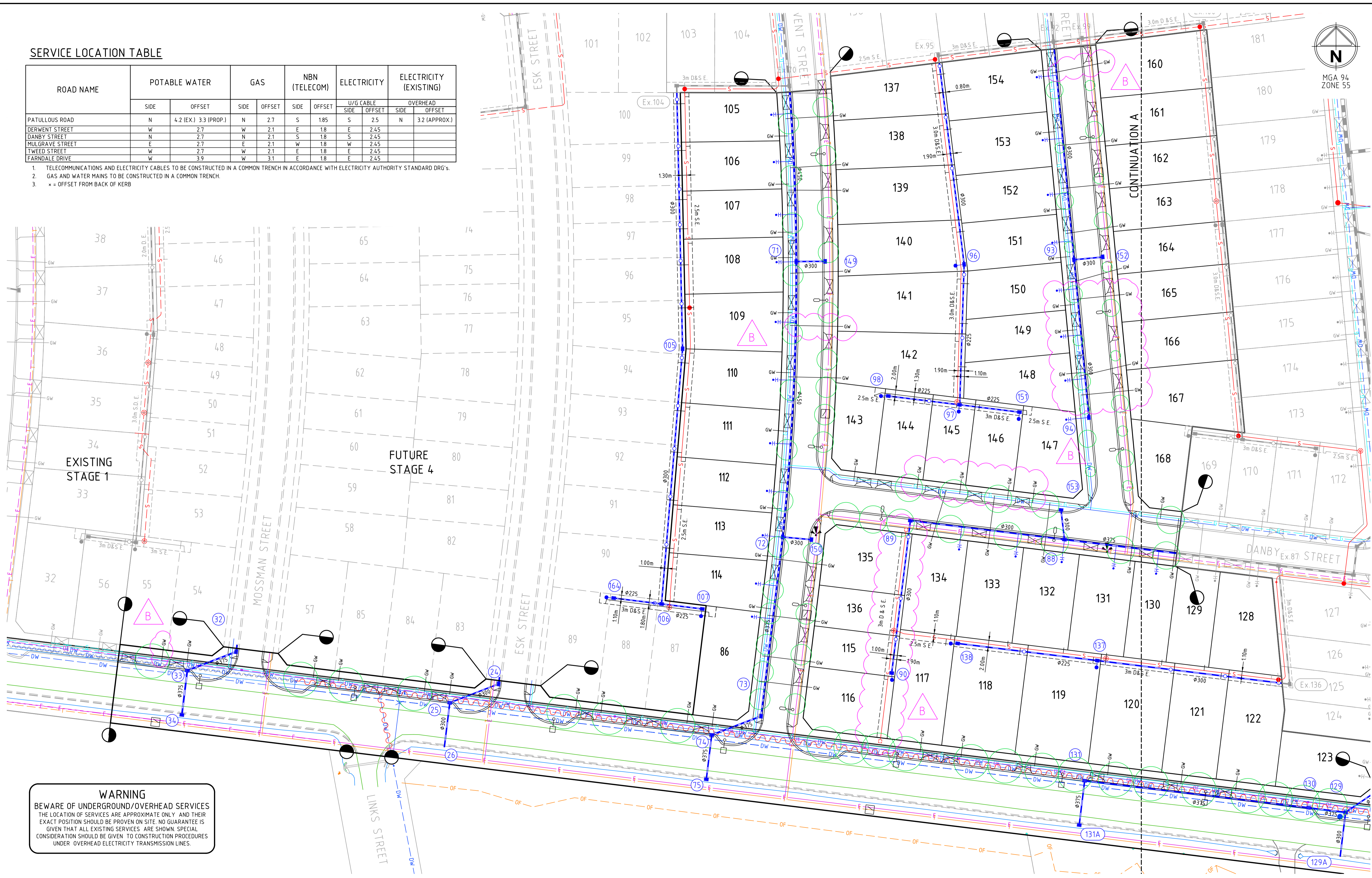
LARA WEST DEVELOPMENT
STAGE 3
ROAD AND DRAINAGE
ROAD LAYOUT PLANS - SHEET 2
 CITY OF GREATER GEELONG
 AUSTIN LAND PTY LTD

PRELIMINARY Dwg No **306713CR201** Rev **B**

SERVICE LOCATION TABLE

ROAD NAME	POTABLE WATER		GAS		NBN (TELECOM)		ELECTRICITY		ELECTRICITY (EXISTING)	
	SIDE	OFFSET	SIDE	OFFSET	SIDE	OFFSET	U/G CABLE SIDE	U/G CABLE OFFSET	OVERHEAD SIDE	OVERHEAD OFFSET
PATULLOUS ROAD	N	4.2 (EX.) 3.3 (PROP.)	N	2.7	S	1.85	S	2.5	N	3.2 (APPROX.)
DERWENT STREET	N	2.7	N	2.1	E	1.8	E	2.45		
DANBY STREET	N	2.7	N	2.1	S	1.8	S	2.45		
MULGRAVE STREET	E	2.7	E	2.1	W	1.8	W	2.45		
TWEED STREET	W	2.7	W	2.1	E	1.8	E	2.45		
FARNDAL DRIVE	W	3.9	W	3.1	E	1.8	E	2.45		

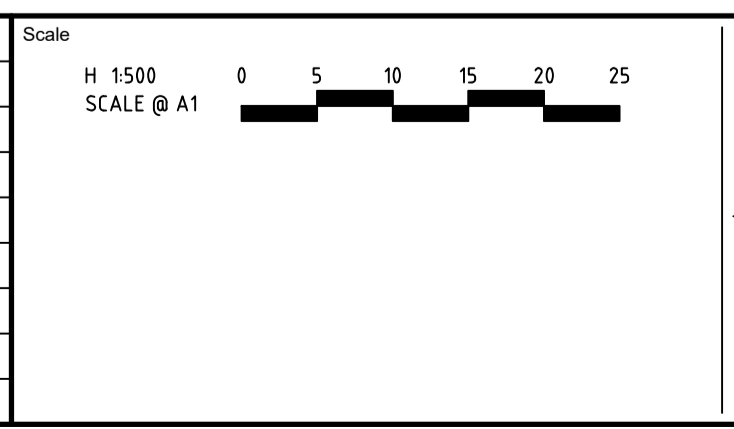
1. TELECOMMUNICATIONS AND ELECTRICITY CABLES TO BE CONSTRUCTED IN A COMMON TRENCH IN ACCORDANCE WITH ELECTRICITY AUTHORITY STANDARD DRG'S.
2. GAS AND WATER MAINS TO BE CONSTRUCTED IN A COMMON TRENCH.
3. * = OFFSET FROM BACK OF KERB



WARNING
 BEWARE OF UNDERGROUND/OVERHEAD SERVICES
 THE LOCATION OF SERVICES ARE APPROXIMATE ONLY AND THEIR EXACT POSITION SHOULD BE PROVEN ON SITE. NO GUARANTEE IS GIVEN THAT ALL EXISTING SERVICES ARE SHOWN. SPECIAL CONSIDERATION SHOULD BE GIVEN TO CONSTRUCTION PROCEDURES UNDER OVERHEAD ELECTRICITY TRANSMISSION LINES.

file name: 306713CR202.dwg layout name: CD202 plotted by: Jerral Ramsay
 file location: G:\306713\306713.dwg plot date: 22/03/2021 2:14 PM sheet 4 of 30 sheets

Rev	Description	Approved	Date
B	AMENDED SEWER LAYOUT, EASEMENT AND WATER CONN LOCATIONS	C.B	05/03/21
A	ISSUED TO COUNCIL	C.B	08/09/20
Rev	Amendments	Approved	Date



© Spiire Australia Pty Ltd All Rights Reserved
 This document is produced by Spiire Australia Pty Ltd solely for the benefit of and use by the client in accordance with the terms of the retainer. Spiire Australia Pty Ltd does not and shall not assume any responsibility or liability whatsoever to any third party arising out of any use or reliance by third party on the content of this document.

10 MOORABOOL STREET GEELONG
 VICTORIA 3220 AUSTRALIA T 61 3 5249 6888
 spiire.com.au ABN 55 050 029 635

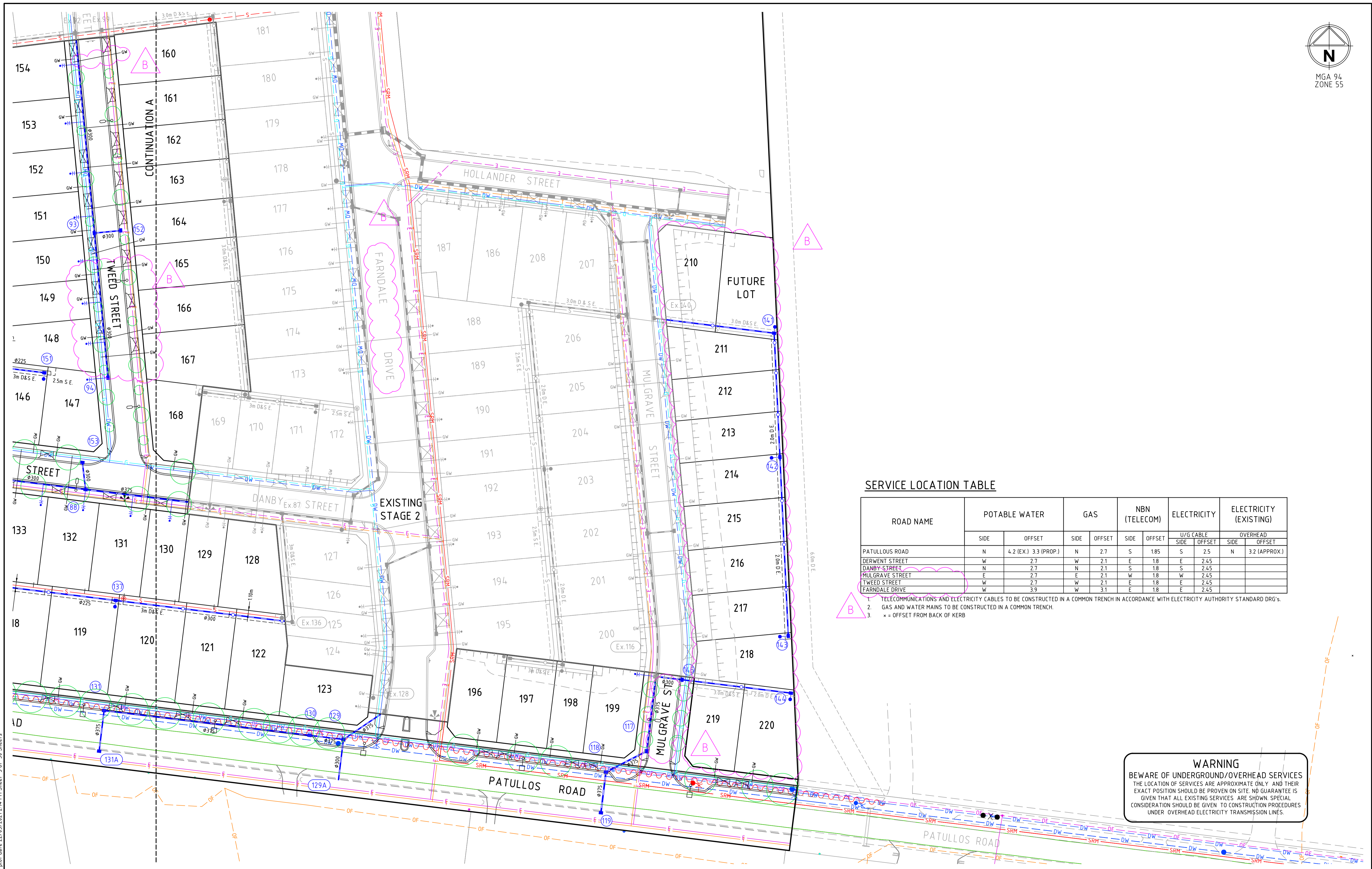
AUSTIN LAND

Designed: J.RAMSAY
 Authorised: C.BIRKETT

Checked: J.KOEHLER
 Date: 08-09-2020

LARA WEST DEVELOPMENT STAGE 3
 ROAD AND DRAINAGE SERVICES PLAN - SHEET 3
 CITY OF GREATER GEELONG
 AUSTIN LAND PTY LTD

PRELIMINARY Drg No: 306713CR202 Rev: B



SERVICE LOCATION TABLE

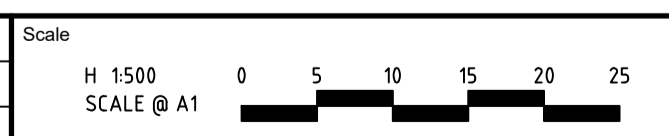
ROAD NAME	POTABLE WATER		GAS		NBN (TELECOM)		ELECTRICITY		ELECTRICITY (EXISTING)	
	SIDE	OFFSET	SIDE	OFFSET	SIDE	OFFSET	U/G CABLE SIDE	OFFSET	SIDE	OFFSET
PATULLOUS ROAD	N	4.2 (EX) 3.3 (PROP.)	N	2.7	S	1.85	S	2.5	N	3.2 (APPROX.)
DERWENT STREET	W	2.7	W	2.1	E	1.8	E	2.45		
DANBY STREET	N	2.7	N	2.1	S	1.8	S	2.45		
MULGRAVE STREET	E	2.7	E	2.1	W	1.8	W	2.45		
TWEED STREET	W	2.7	W	2.1	E	1.8	E	2.45		
FARNDALE DRIVE	W	3.9	W	3.1	E	1.8	E	2.45		

- TELECOMMUNICATIONS AND ELECTRICITY CABLES TO BE CONSTRUCTED IN A COMMON TRENCH IN ACCORDANCE WITH ELECTRICITY AUTHORITY STANDARD DRG'S.
- GAS AND WATER MAINS TO BE CONSTRUCTED IN A COMMON TRENCH.
- x = OFFSET FROM BACK OF KERB

WARNING
BEWARE OF UNDERGROUND/OVERHEAD SERVICES
THE LOCATION OF SERVICES ARE APPROXIMATE ONLY AND THEIR EXACT POSITION SHOULD BE PROVEN ON SITE. NO GUARANTEE IS GIVEN THAT ALL EXISTING SERVICES ARE SHOWN. SPECIAL CONSIDERATION SHOULD BE GIVEN TO CONSTRUCTION PROCEDURES UNDER OVERHEAD ELECTRICITY TRANSMISSION LINES.

file name: 306713CR203.dwg layout name: CD039 created by: Jerrad Ramsay file location: G:\306713\306713\306713.dwg plot date: 22/03/2021 7:14: PM sheet: 5 of 30 sheets

Rev	Amendments	Approved	Date
B	AMENDED ROAD NAMES, ADDED LOTS AND AMENDED WATER CONN LOCATIONS	C.B	05/03/21
A	ISSUED TO COUNCIL	C.B	08/09/20



© Spiire Australia Pty Ltd All Rights Reserved
This document is produced by Spiire Australia Pty Ltd solely for the benefit of and use by the client in accordance with the terms of the retainer. Spiire Australia Pty Ltd does not and shall not assume any responsibility or liability whatsoever to any third party arising out of any use or reliance by third party on the content of this document.



10 MOORABOOL STREET GEELONG
VICTORIA 3220 AUSTRALIA T 61 3 5249 6888
spiire.com.au ABN 55 050 029 635

AUSTIN LAND

Designed
J.RAMSAY
Authorised
C.BIRKETT
Checked
J.KOEHLER
Date
08-09-2020

**LARA WEST DEVELOPMENT
STAGE 3
ROAD AND DRAINAGE
SERVICES PLAN - SHEET 4
CITY OF GREATER GEELONG
AUSTIN LAND PTY LTD**

PRELIMINARY Drg No: 306713CR203 Rev: B