

**LEGEND**

- 7m SENSITIVE VEGETATION BUFFER ZONE
- SENSITIVE VEGETATION ZONE

**WARNING**  
 BEWARE OF UNDERGROUND/OVERHEAD SERVICES  
 THE LOCATION OF SERVICES ARE APPROXIMATE ONLY, AND THEIR EXACT POSITION SHOULD BE PROVEN ON SITE. NO GUARANTEE IS GIVEN THAT ALL EXISTING SERVICES ARE SHOWN. SPECIAL CONSIDERATION SHOULD BE GIVEN TO CONSTRUCTION PROCEDURES UNDER OVERHEAD ELECTRICITY TRANSMISSION LINES.

file name: 306712CR200.dwg, layout name: CR200, plotted by: Jerrard Parnaby, plot date: 23/06/2020 5:06 PM, Sheet 2 of 33 Sheets, file location: \\spire\projects\306712\Drawings\306712.dwg

Rev	Amendments	Approved	Date
A	ISSUED TO AUTHORITY	C.B	26/06/20



© Spiire Australia Pty Ltd All Rights Reserved  
 This document is produced by Spiire Australia Pty Ltd solely for the benefit of and use by the client in accordance with the terms of the retainer. Spiire Australia Pty Ltd does not and shall not assume any responsibility or liability whatsoever to any third party arising out of any use or reliance by third party on the content of this document.

10 MOORABOOL STREET GEELONG  
 VICTORIA 3220 AUSTRALIA T 61 3 5249 6888  
 spiire.com.au ABN 55 050 029 635

**AUSTIN LAND**

Designed  
**J.RAMSAY**

Checked  
**J.KOELHER**

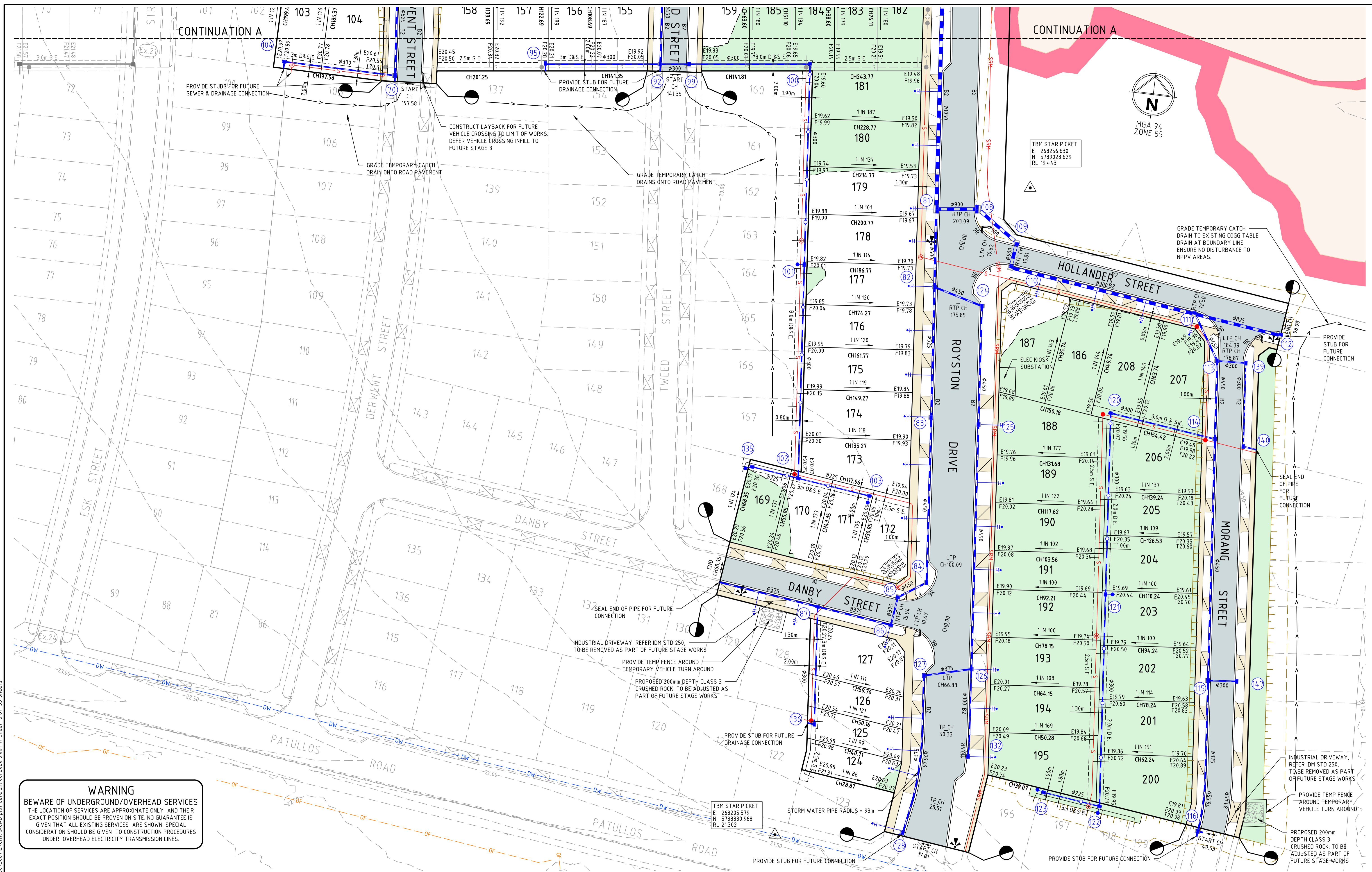
Authorised  
**C.BIRKETT**

Date  
 23-06-2020

**LARA WEST DEVELOPMENT  
 STAGE 2  
 ROAD AND DRAINAGE  
 ROAD LAYOUT PLANS - SHEET 1  
 CITY OF GREATER GEELONG  
 AUSTIN LAND PTY LTD**

**PRELIMINARY** Drg No **306712CR200** Rev **A**

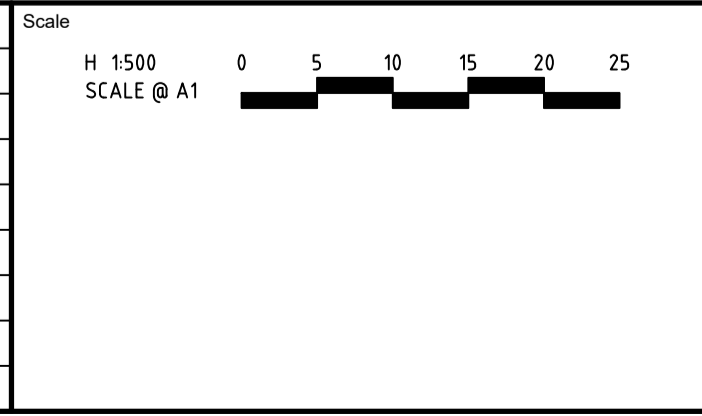




**WARNING**  
 BEWARE OF UNDERGROUND/OVERHEAD SERVICES  
 THE LOCATION OF SERVICES ARE APPROXIMATE ONLY AND THEIR EXACT POSITION SHOULD BE PROVEN ON SITE. NO GUARANTEE IS GIVEN THAT ALL EXISTING SERVICES ARE SHOWN. SPECIAL CONSIDERATION SHOULD BE GIVEN TO CONSTRUCTION PROCEDURES UNDER OVERHEAD ELECTRICITY TRANSMISSION LINES.

file name: 30612CR201.dwg, layout: ramsay, cgs201, plotted by: jramsay, plot date: 23/06/2020 5:06 PM, Sheet 3 of 33 Sheets  
 file location: \\spire\projects\30612CR201\Drawings\30612CR201.dwg

Rev	Issued To Authority	Amendments	C.B	26/06/20	Approved	Date
A	ISSUED TO AUTHORITY		C.B	26/06/20		



© Spiire Australia Pty Ltd All Rights Reserved  
 This document is produced by Spiire Australia Pty Ltd solely for the benefit of and use by the client in accordance with the terms of the retainer. Spiire Australia Pty Ltd does not and shall not assume any responsibility or liability whatsoever to any third party arising out of any use or reliance by third party on the content of this document.

10 MOORABOOL STREET GEELONG  
 VICTORIA 3220 AUSTRALIA T 61 3 5249 6888  
 spiire.com.au ABN 55 050 029 635

**AUSTIN LAND**

Designed: J.RAMSAY  
 Authorised: C.BIRKETT

Checked: J.KOELHER  
 Date: 23-06-2020

**LARA WEST DEVELOPMENT STAGE 2**  
 ROAD AND DRAINAGE ROAD LAYOUT PLANS - SHEET 2  
 CITY OF GREATER GEELONG  
 AUSTIN LAND PTY LTD

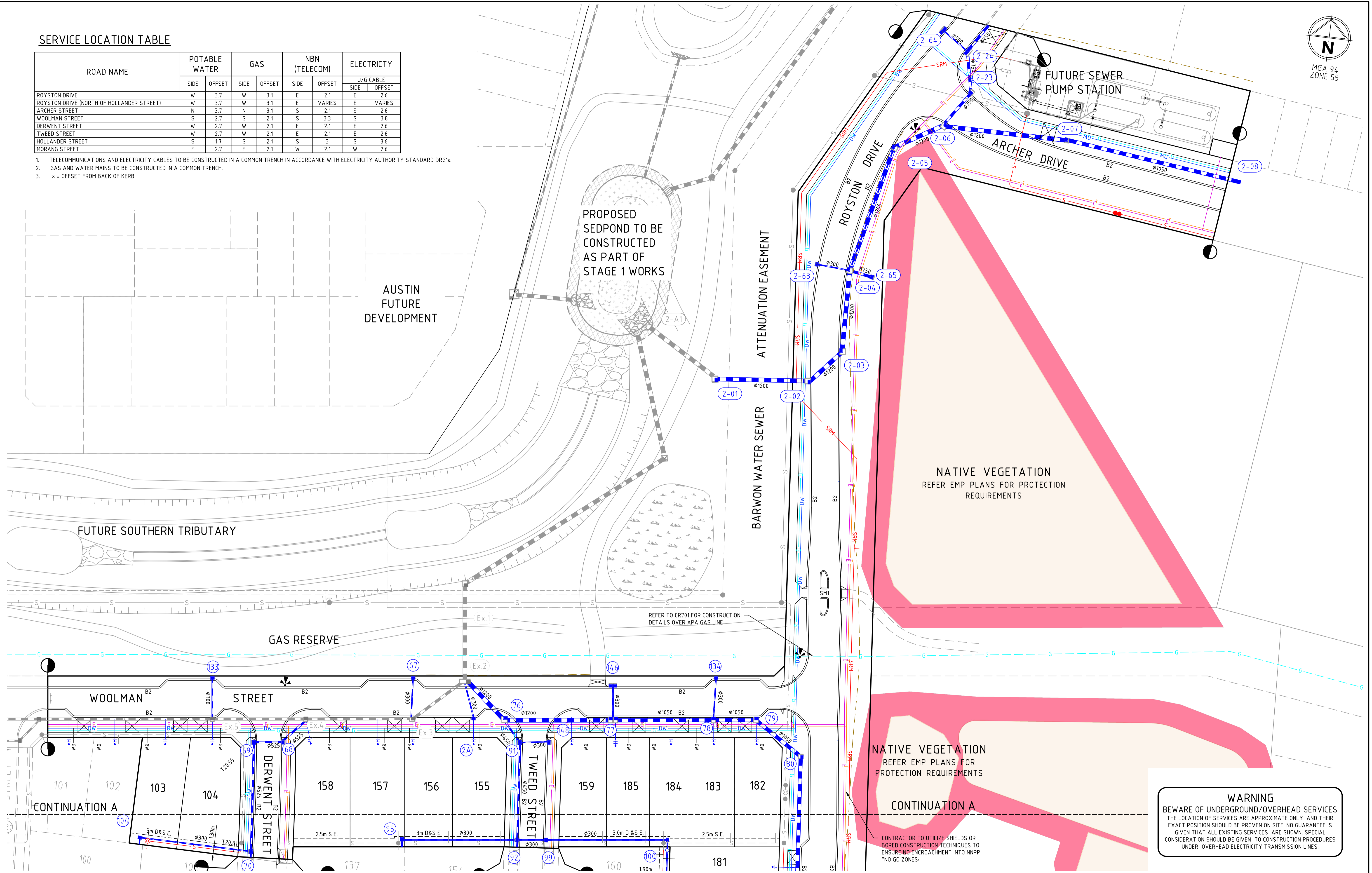
**PRELIMINARY** Drg No: 306712CR201 Rev: A



**SERVICE LOCATION TABLE**

ROAD NAME	POTABLE WATER		GAS		NBN (TELECOM)		ELECTRICITY	
	SIDE	OFFSET	SIDE	OFFSET	SIDE	OFFSET	U/G CABLE	
							SIDE	OFFSET
ROYSTON DRIVE	W	3.7	W	3.1	E	2.1	E	2.6
ROYSTON DRIVE (NORTH OF HOLLANDER STREET)	W	3.7	W	3.1	E	VARIES	E	VARIES
ARCHER STREET	N	3.7	N	3.1	S	2.1	S	2.6
WOOLMAN STREET	S	2.7	S	2.1	S	3.3	S	3.8
DERWENT STREET	W	2.7	W	2.1	E	2.1	E	2.6
TWEED STREET	W	2.7	W	2.1	E	2.1	E	2.6
HOLLANDER STREET	S	1.7	S	2.1	S	3	S	3.6
MORANG STREET	E	2.7	E	2.1	W	2.1	W	2.6

1. TELECOMMUNICATIONS AND ELECTRICITY CABLES TO BE CONSTRUCTED IN A COMMON TRENCH IN ACCORDANCE WITH ELECTRICITY AUTHORITY STANDARD DRG'S.
2. GAS AND WATER MAINS TO BE CONSTRUCTED IN A COMMON TRENCH.
3. \* = OFFSET FROM BACK OF KERB

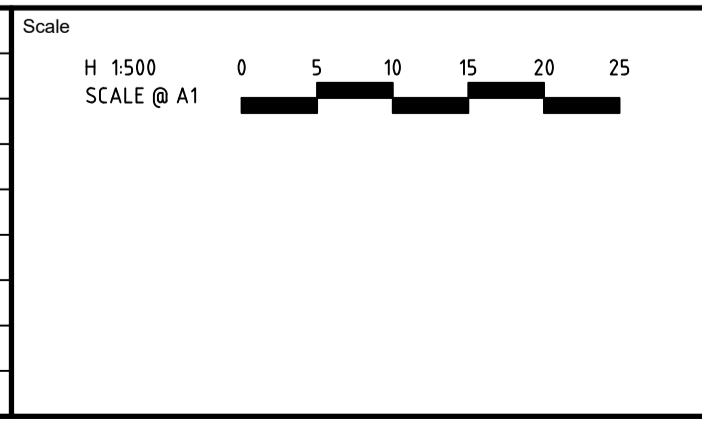


**WARNING**  
 BEWARE OF UNDERGROUND/OVERHEAD SERVICES  
 THE LOCATION OF SERVICES ARE APPROXIMATE ONLY AND THEIR EXACT POSITION SHOULD BE PROVEN ON SITE. NO GUARANTEE IS GIVEN THAT ALL EXISTING SERVICES ARE SHOWN. SPECIAL CONSIDERATION SHOULD BE GIVEN TO CONSTRUCTION PROCEDURES UNDER OVERHEAD ELECTRICITY TRANSMISSION LINES.

CONTRACTOR TO UTILIZE SHIELDS OR BORED CONSTRUCTION TECHNIQUES TO ENSURE NO ENCROACHMENT INTO NNPP "NO GO ZONES"

file name: 306712CR202.dwg, layout name: CD202, plotted by: Jerral Ramsay, file location: G:\306712\306712.dwg, plot date: 22/06/2020 5:07 PM, Sheet 4 of 33 Sheets

Rev	Amendments	Approved	Date
A	ISSUED TO AUTHORITY	C.B	26/06/20



© Spiire Australia Pty Ltd All Rights Reserved  
 This document is produced by Spiire Australia Pty Ltd solely for the benefit of and use by the client in accordance with the terms of the retainer. Spiire Australia Pty Ltd does not and shall not assume any responsibility or liability whatsoever to any third party arising out of any use or reliance by third party on the content of this document.

10 MOORABOOL STREET GEELONG  
 VICTORIA 3220 AUSTRALIA T 61 3 5249 6888  
 spiire.com.au ABN 55 050 029 635

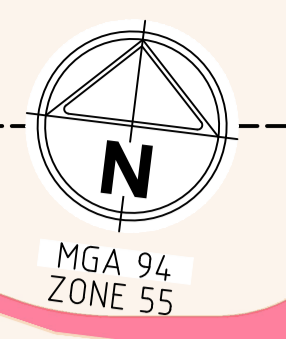
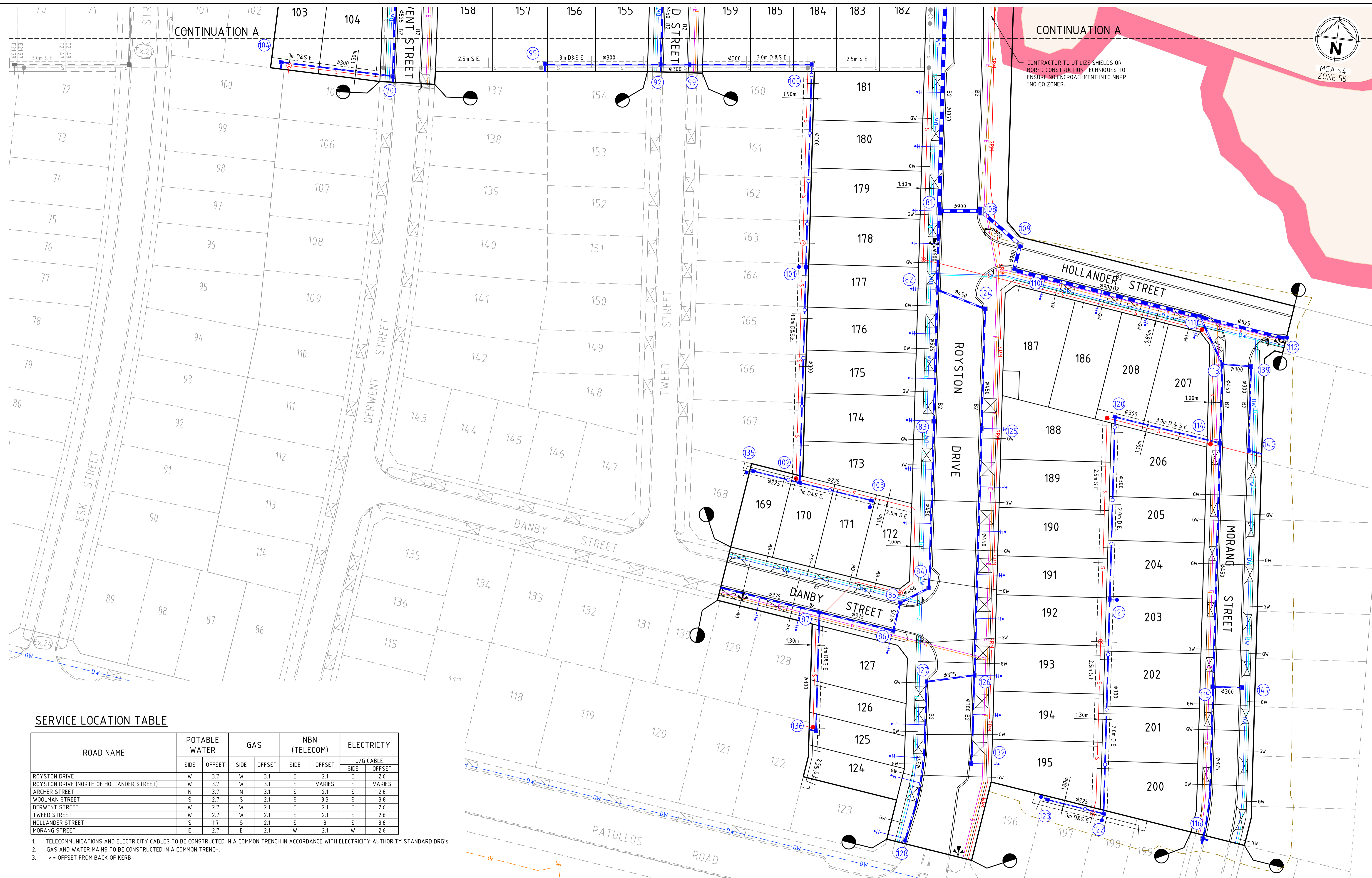
**AUSTIN LAND**

Designed <b>J.RAMSAY</b>	Checked <b>J.KOELHER</b>
Authorised <b>C.BIRKETT</b>	Date <b>23-06-2020</b>

**LARA WEST DEVELOPMENT  
 STAGE 2  
 ROAD AND DRAINAGE  
 ROAD LAYOUT PLANS - SHEET 3  
 CITY OF GREATER GEELONG  
 AUSTIN LAND PTY LTD**

**PRELIMINARY** Drg No **306712CR202** Rev **A**





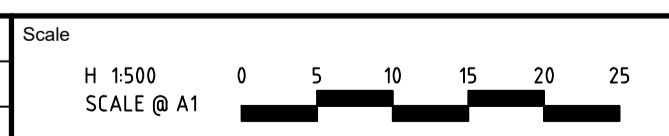
CONTINUATION A

CONTRACTOR TO UTILIZE SHIELDS OR BORED CONSTRUCTION TECHNIQUES TO ENSURE NO ENCROACHMENT INTO NNPP "NO GO ZONES".

**SERVICE LOCATION TABLE**

ROAD NAME	POTABLE WATER		GAS		NBN (TELECOM)		ELECTRICITY	
	SIDE	OFFSET	SIDE	OFFSET	SIDE	OFFSET	U/G CABLE	
							SIDE	OFFSET
ROYSTON DRIVE	W	3.7	W	3.1	E	2.1	E	2.6
ROYSTON DRIVE (NORTH OF HOLLANDER STREET)	W	3.7	W	3.1	E	VARIES	E	VARIES
ARCHER STREET	N	3.7	N	3.1	S	2.1	S	2.6
WOOLMAN STREET	S	2.7	S	2.1	S	3.3	S	3.8
DERWENT STREET	W	2.7	W	2.1	E	2.1	E	2.6
TWEED STREET	W	2.7	W	2.1	E	2.1	E	2.6
HOLLANDER STREET	S	1.7	S	2.1	S	3	S	3.6
MORANG STREET	E	2.7	E	2.1	W	2.1	W	2.6

- TELECOMMUNICATIONS AND ELECTRICITY CABLES TO BE CONSTRUCTED IN A COMMON TRENCH IN ACCORDANCE WITH ELECTRICITY AUTHORITY STANDARD DRG's.
- GAS AND WATER MAINS TO BE CONSTRUCTED IN A COMMON TRENCH.
- \* = OFFSET FROM BACK OF KERB



© Spiire Australia Pty Ltd All Rights Reserved  
 This document is produced by Spiire Australia Pty Ltd solely for the benefit of and use by the client in accordance with the terms of the retainer. Spiire Australia Pty Ltd does not and shall not assume any responsibility or liability whatsoever to any third party arising out of any use or reliance by third party on the content of this document.



10 MOORABOOL STREET GEELONG  
 VICTORIA 3220 AUSTRALIA T 61 3 5249 6888  
 spiire.com.au ABN 55 050 029 635

AUSTIN LAND

Designed  
**J. RAMSAY**  
 Authorised  
**C. BIRKETT**

Checked  
**J. KOELHER**  
 Date  
 23-06-2020

**LARA WEST DEVELOPMENT  
 STAGE 2  
 ROAD AND DRAINAGE  
 ROAD LAYOUT PLANS - SHEET 4  
 CITY OF GREATER GEELONG  
 AUSTIN LAND PTY LTD**

**PRELIMINARY** Drg No **306712CR203** Rev **A**

file name: 306712CR203.dwg, layout: ramsay\_C0203, plotted by: Jarral, P, Date: 23/06/2020 5:07 PM, Sheet: 5 of 33 Sheets, file location: \\spiire\projects\306712\Drawings\306712.dwg

Rev	Issued To Authority	Approved	Date
A	ISSUED TO AUTHORITY	C.B	26/06/20
Rev	Amendments	Approved	Date